

# Product Technical Spec Sheet

## BUGS IN A BUCKET® MICROBIAL WASTEWATER TREATMENT

# SEPTIC PLUS

BUGS IN A BUCKET® SEPTIC PLUS is a highly effective blend of beneficial bacteria designed to accelerate degradation of organic wastes and toilet paper, reduce odours and keep septic systems operating efficiently.

### Active Ingredients:

- Bacillus bacteria

### Concentration:

- 2 Billion CFU/g

### Physical Properties:

- Tan coloured powder
- Odourless

### Packaging:

- 5kg / 25kg bulk bucket
- 1 year treatment of water soluble sachet

### Storage and Handling:

- Dry and cool
- Keep container closed tightly when not in use

### Shelf Life:

- 2 years



## APPLICATIONS

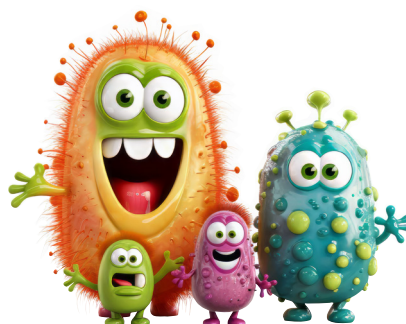
- Commercial septic tanks.
- Domestic septic tanks.
- Pit toilets.
- Portable toilets.

## FEATURES

- A highly effective blend of beneficial bacteria to keep septic systems operating efficiently.
- Accelerate break down of organic wastes and toilet paper within the septic tank.
- Highly effective odour control - beneficial bacteria work to tackle odour at the source.
- Eco-benign technology and a simple application process make this a safe product for the user and the environment.
- 1 Year supply - use 1 sachet per month, deposit directly into the toilet.
- The Bacillus strains in Septic Plus have been scientifically developed to promote the rapid breakdown and digestion of various forms of black and grey waste water including organic waste matter, toilet paper, detergents, greases, fats, oils, paper and other organic waste materials commonly found in these systems.
- The Bacillus strains in our product are fast growing for commissioning and upset recovery of septic tank devices.
- They are proven to enhance floc formation for rapid plant start-up and create biomass that is more resistant to chemical loads such as bleach.

## DOSING

- Water-soluble sachets are available in a bucket containing:
  - 1 x 200g sachet and 12 x 100g sachets.
- Sufficient for effective dosing of a septic system that serves a family of 4 to 6 people for 12 months.
- First dose the 200g sachet directly into the toilet bowl, leave for a few minutes and then flush.
- Thereafter 1 x 100g sachet per month dosed the same way.
- Loose powder can be dosed at 150g per 1000L volume of the septic system. Dose directly into the toilet bowl or nearest access point. An initial dose of 200 - 300g, thereafter a monthly dose of 150g per 1000L per month.
- For system upsets and toxic shocks, a booster dose of 200g to 500g can be dosed.
- For sewage spills, simply scatter the powder over the surface of the spill.



Manufactured by:



Distributed by:

